

MOD / NATO Disposals

ilitary vehicles and equipment for sale

www.modsurplus.co.uk

Tel: +44 (0)1302-954007

Mercedes Atego 1828 4x4 Crane Truck -
MoD Ref: 50349



Mercedes Atego 1828 4x4 Crane Truck

Fitted with a Atlas 82.2 Hydraulic crane with a max reach of 12,8 metres

Cargo body with aluminium drop sides

Previously Uk road registered

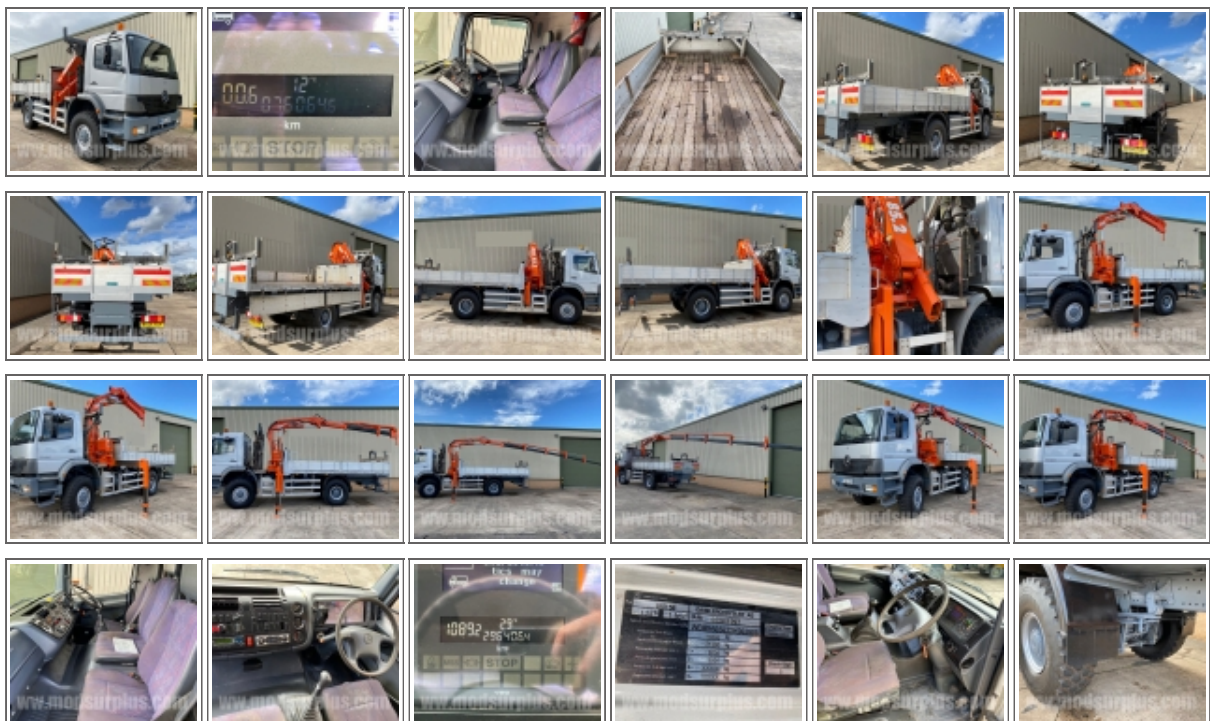
Front and rear diff locks

14.00R20 Michelin Tyres

Low Kilometres

CATEGORY	Crane Truck
MANUFACTURERS	Mercedes
ENGINE	OM 906 280 HP
GEARBOX	Manual 12 Speed
BRAKES	Air over Hydraulic
STEERING	RHD - PAS
TYRES	Michelin 14.00R20
MAXIMUM LOAD	
ELECTRICS	24v
L x W x H	8.35M x 2.5M x 3.65M
GROSS WEIGHT	18,000 Kg
HOURS / MILEAGE	76,064 Kilometres
DATE INTO SERVICE	2005
YEAR OF MANUFACTURE	2005
QTY AVAILABLE	1
EXPORT REQUIREMENTS ...more	NLR
<hr/>	
<hr/>	
<hr/>	
<hr/>	
<hr/>	

Photo Gallery





All prices quoted are GBP U.K. Pounds Sterling Ex. Works excluding VAT where applicable and shipping / associated costs.

Vehicles advertised are subject to remaining unsold.

All prices quoted are based on "per individual unit" purchased, any reductions on advertised price for multiple item orders is subject to negotiation and is conducted at the time of inspection or provision of LOI.

For complete Terms & Conditions See Main Website

Photo's shown above may represent a vehicle type rather than an actual vehicle, vehicles are available serviced and painted to customers preference

An export licence may be required for items sold to customers outside of the U.K.
FOR MORE INFORMATION ON EXPORT LICENCING PROCEDURES

[CLICK HERE](#)

FOR INFORMATION ON CURRENT EU EMBARGOES

[CLICK HERE](#)